

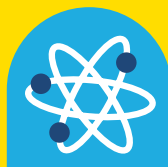
Suitable for
3-7 years

- Solo
- Pairs
- Groups

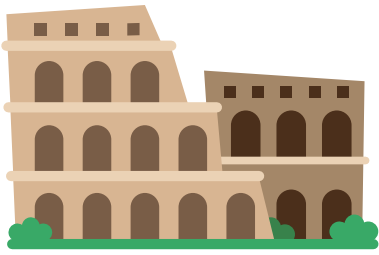
Fionah's activity

Structure cards

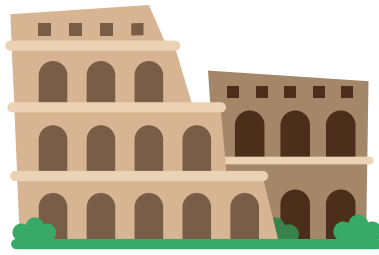
Resource Pack



Colosseum



Colosseum



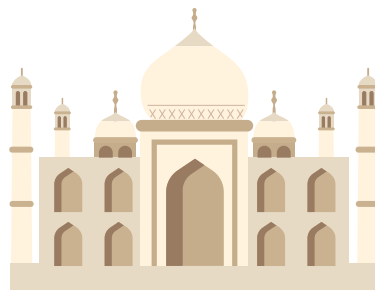
Statue of Christ the Redeemer



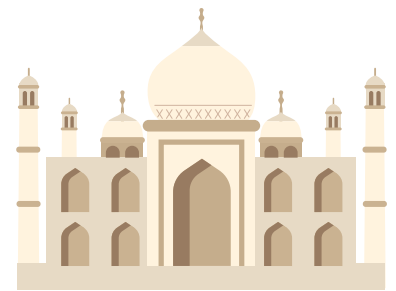
Statue of Christ the Redeemer



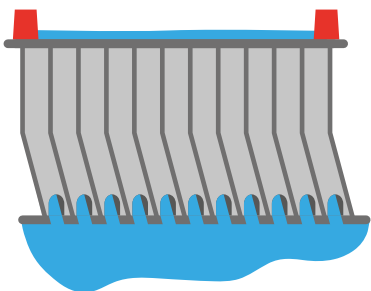
Taj Mahal



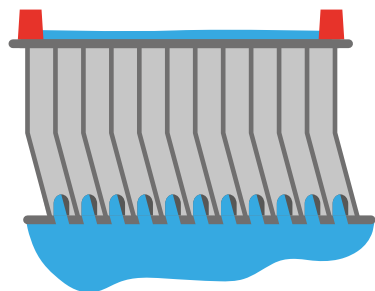
Taj Mahal



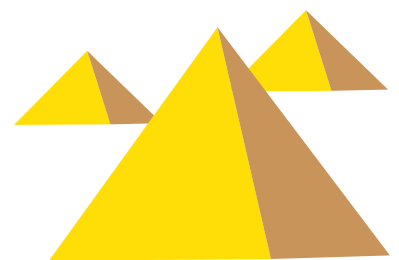
Three gorges dam



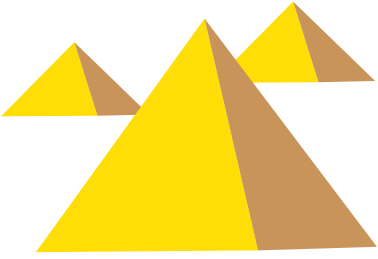
Three gorges dam



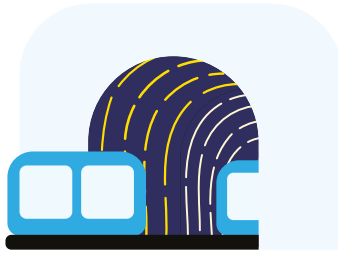
Great pyramids of Giza



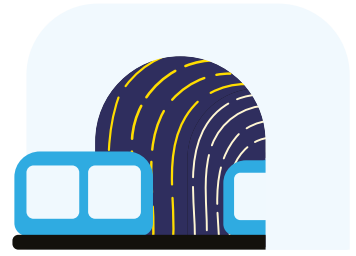
Great pyramids
of Giza



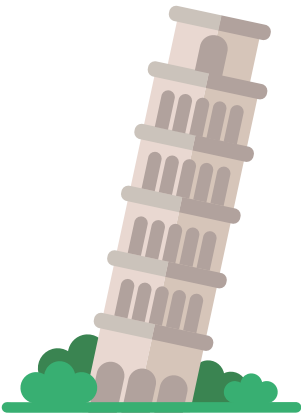
Bund site
seeing tunnel



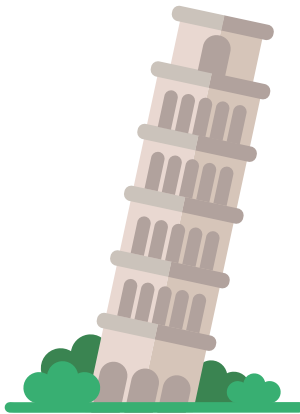
Bund site
seeing tunnel



Leaning tower
of Pisa



Leaning tower
of Pisa



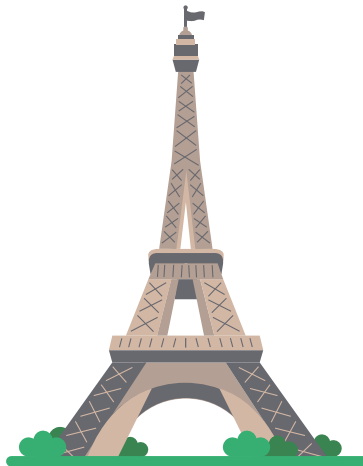
Tower bridge



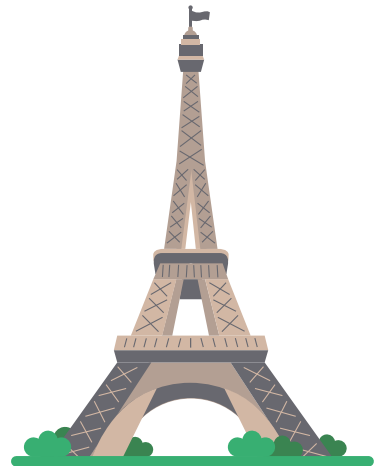
Tower bridge



Eiffel Tower



Eiffel Tower



Statue of Liberty



Statue of Liberty



The Atlantic Road



The Atlantic Road



Grand canal

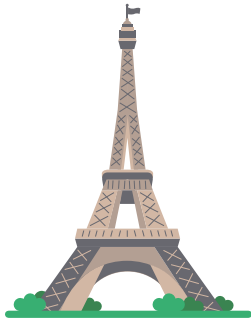


Grand canal



Famous Structures Fact Sheet

1



Eiffel Tower

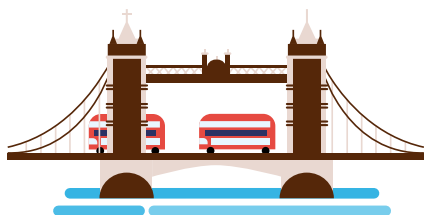
Location: Paris, France
When was it built? 1887
Why was it built? Tourism
Main building materials:..... Cast iron and steel
Height 324m to the top



2

Grand Canal

Location: Venice, Italy
When was it built? 1710
Why was it built? As a water way
Dimensions:..... 3.8 km long

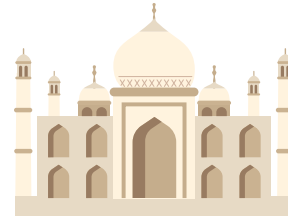


3

Tower Bridge

Location: London, United Kingdom
When was it built? 1886
Why was it built? Access to the East of London
Main building materials:..... Steel, granite, and stone masonry
Dimensions:..... 286.5m long and 18.3m wide

4



Taj Mahal

Location: Agra, India
When was it built? 1631
Why was it built? Built as a tomb for Mumtaz Mahal "Chosen One of the Palace" by her husband, the Mughal emperor Shah Jahān
Main building materials:..... Brick-in-lime mortar, red sandstone, marble, and precious stones
Height 73m

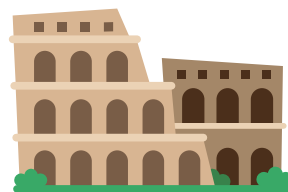


5

Statue of Christ the Redeemer

Location: Rio de Janeiro, Brazil
When was it built? 1922
Why was it built? Used as a shelter and for religious purposes
Main building materials:..... Concrete and soap stone tiles
Height: 30m

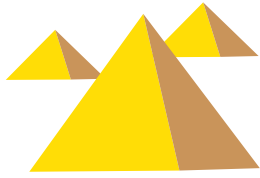
6



Colosseum

Location: Rome, Italy
When was it built? 70 AD
Why was it built? Arena for entertainment
Main building materials:..... Travertine, concrete, and bricks
Dimensions:..... 189m long and 156m wide

7



Great Pyramids of Giza

Location: Giza, Egypt
When was it built? 2550 BC
Why was it built? Tombs for Egyptians Pharaohs
Main building materials:..... Limestone, granite, and mud bricks
Dimensions:..... 147m high and 230m wide

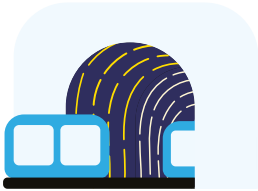
10



The Atlantic Road

Location: Atlanterhavsveien, Norway
When was it built? 1983
Why was it built? Access between two villages.
Main building materials:..... Asphalt road surface and crushed stone aggregates.
Dimensions:..... 8.3 km long, wide 6.5

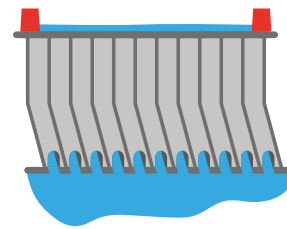
8



Bund Sightseeing Tunnel

Location: Shanghai, China
When was it built? 2007
Why was it built? For train traffic
Main building materials:..... Concrete and steel
Dimensions:..... 646.7m long

11



Three Gorges Dam

Location: Hubei, China
When was it built? 1994
Why was it built? To prevent flooding
Main building materials:..... Concrete and steel
Dimensions:..... 2335m long, 185m high

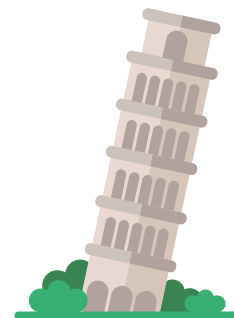
9



Statue of Liberty

Location: New York City, U.S.A
When was it built? 1875
Why was it built? Given to the United States from France to celebrate the friendship during the American Revolution.
Main building materials:..... Gold, copper, steel, and cast iron.
Height: 93m

12



Leaning Tower of Pisa

Location: Pisa, Italy
When was it built? 1173
Why was it built? A bell tower for the Cathedral
Main building materials:..... Marble, lime, and stone
Height: 57m